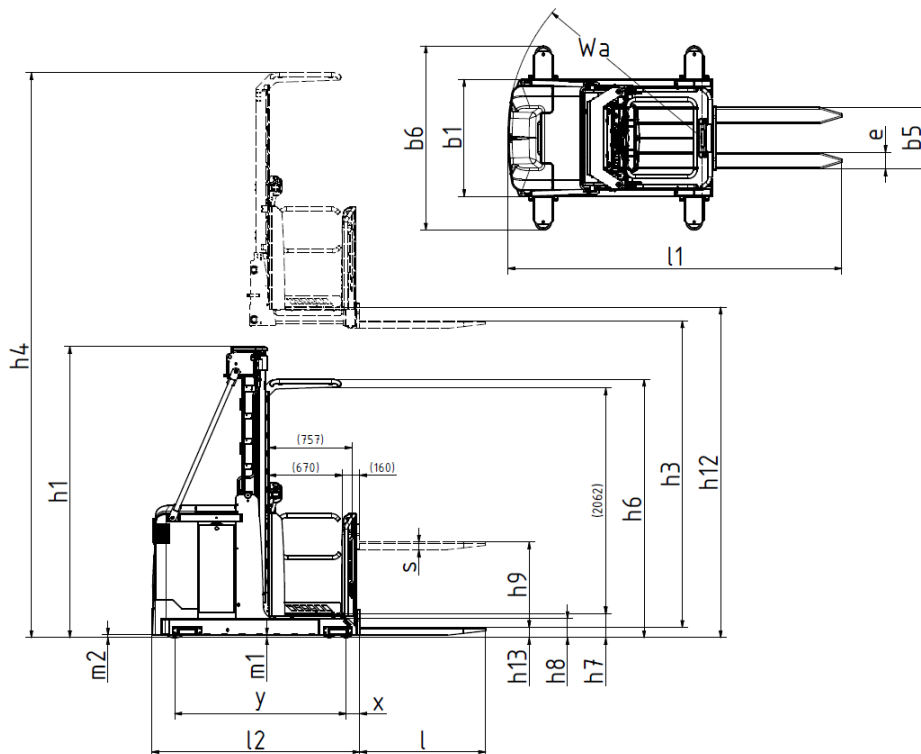


**EPH 125 DTFV**

1250 kg high level order picker.  
 Providing picking heights up to 12.100 mm.  
 Combining great performance with high levels of safety.



Mast type	Lift height H / h12	Height of mast lowered h1	Max mast height h4
Triplex	6000	2770	8160
	6750	3020	8910
	7500	3270	9660
	8250	3520	10410
	9000	3770	11160
	9750	4020	11910
	10500	4270	12660
Standard/Duplex			

	0	Specification	EPH 125 DTFV		
Distinguishing mark	1.2	Manufacturer's type designation			
	1.3	Drive: electric (battery or mains), diesel, petrol, fuel gas	Electric		
	1.4	Operator type: hand, pedestrian, standing, seated, order-picker	Order picker		
	1.5	Load capacity/rated load	Q t	1,25	
	1.6	Load centre distance	c mm	400-600	
Weight	1.8	Load distance, centre of load axle to fork	X	126	
	1.9	Wheelbase	y mm	1760	
	2.1	Service weight incl battery	kg	2720 kg + 97 x h12 (m)	
	2.2	Axle load, with load, front/rear	kg	1610/3450 Min batt.	
	2.3	Axle load, without load, front / rear	kg	2220/1590 Min batt.	
Tyres, chassis	2.4	Axle load, fork outreached with load, front / rear	kg	n/a	
	2.5	Axle load, fork retracted with load, front / rear	kg	n/a	
	3.1	Tyres		Vulcollan	
	3.2	Tyre size, drive side	mm	355x155	
	3.3	Tyre size, load side	mm	150x55	
Dimensions	3.4	Dimensions additional wheels (castor wheels)	mm	n/a	
	3.5	Wheels, number front/rear (drive side/load side, x = driven wheels)		1x/8	
	3.6	Track, drive side	b10 mm	0	
	3.7	Track, load side	b11 mm	1006/1186	
	4.1	Tilt of mast/fork carriage, forward/backward	Grad	n/a	
	4.2	Height, mast lowered	h1 mm	h12/3+770	
	4.3	Free lift	h2 mm	n/a	
	4.4	Lift height H = h13+h3	H mm	5785-10285 (without h9)	
	4.5	Height, mast extended	h4 mm	h12+2160	
	4.6	Straddle lift	h5 mm	n/a	
	4.7	Height of overhead guard (cabin)	h6 mm	2356	
	4.8	Seat height/stand height	h7 mm	215-h12	
	4.10	Height of wheel arms	h8 mm	175	
	4.11	Additional lift	h9 mm	775	
	4.14	Stand height, elevated	h12 mm	6000-10500	
	4.15	Height lowered	h13 mm	90	
	4.19	Overall length	l1 mm	3290	
	4.20	Length to face of forks	l2 mm	2139	
	4.21	Overall width	b1 mm	1170/1350	
	4.21.1	Width over stabilizers	mm	n/a	
	4.22	Fork dimensions	s/e/l mm	70/147/1150	
	4.23	Fork carriage to ISO 2328, clas / form A, B		n/a	
	4.24	Width of fork carriage	b3 mm	560	
	4.25	Width over forks, min/max	b5 mm	450 - 800	
	4.26	Distance between wheel arms	b4 mm	n/a	
	4.27	Width across guide rolls	b6 mm	1348-1814	
	4.28	Reach distance	l4 mm	n/a	
	4.29	Reach lateral	b7 mm	n/a	
	4.30	Reach lateral from vehicle centerline	b8 mm	n/a	
	4.31	Ground clearance, mast	m1 mm	n/a	
	4.32	Ground clearance, centre of wheelbase	m2 mm	25	
	4.33	Aisle width with pallet 1000 x 1200, crosswise	Ast mm	n/a	
	4.34	Aisle width for pallet 800 x 1200, lengthwise	Ast mm	Platform or load width + clearance	
	4.35	Turning radius	Wa mm	2020	
	4.37	Length incl reach legs	l7 mm	n/a	
	4.38	Distance to swivelling-fork pivot	0 mm	n/a	
	Performance data	5.1	Travel speed, with/without load	km/h	12/12
		5.1.1	Travel speed with/without load, backwards	km/h	12/12
5.2		Lift speed, with/without load	m/s	0,36/0,44	
5.3		Lowering speed, with/without load	m/s	0,45/0,41	
5.4		Reach speed, with / without load	m/s	n/a	
5.7		Gradient, with/without load	%	n/a	
5.8		Max gradeability, with / without load, 5 min rating	%	6,2	
5.9		Acceleration time 0-10 m, with/without load	s	5,5/5,2	
5.10		Service brake: electric, hydraulic		Electric	
5.10.1		Parking brake: electric, hydraulic		Electric	
Electric engine	6.1	Drive motor, rating S2 60 min	kW	5,9	
	6.2	Lift motor	kW	11	
	6.3	Battery according to DIN 43531/35/36	A,B,C	DIN 43531 B	
	6.4	Battery voltage / Battery capacity	V/Ah	48/500-620	
	6.5	Battery weight	kg	Min 890 Max 1125	
	6.6	Power consumption according to VDI cycle	kWh/h		
Additional data	8.1	Speed regulation		AC traction	
	10.1	Operating pressure attachments	bar	n/a	
	10.2	Oil flow for attachments	l/min	n/a	
	10.7	Noise level at operator's ear, according to EN 12 053	db(A)	65	

\* Varies according to battery size

All rights reserved to change above specification