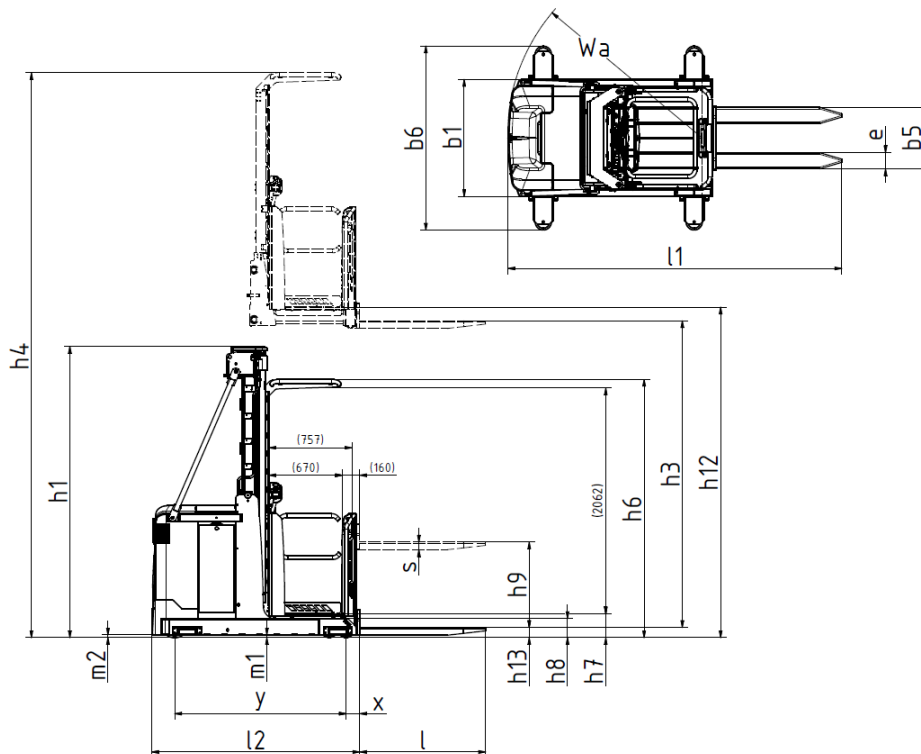


EPM 100 TV

1000 kg medium level order picker.
 Providing picking heights up to 9000 mm. Combining great performance with high levels of safety.



Mast type	Lift height H / h12	Height of mast lowered h1	Max mast height h4
Triplex			
Standard/Duplex	3600	2392	5740
	4000	2592	6140
	4400	2792	6540
	4700	2942	6840
	5000	3092	7140
	5400	3292	7540
	5800	3492	7940
	6200	3692	8340
	6600	3892	8740
	7000	4092	9140
7400	4292	9540	

Distinguishing mark	0	Specification		EPM 100 TV	
	1.2	Manufacturer's type designation			
	1.3	Drive: electric (battery or mains), diesel, petrol, fuel gas		Electric	
	1.4	Operator type: hand, pedestrian, standing, seated, order-picker		Order picker	
	1.5	Load capacity/rated load	Q	t	1
	1.6	Load centre distance	c	mm	400-600
	1.8	Load distance, centre of load axle to fork	X		125
	1.9	Wheelbase	y	mm	1568
	Weight	2.1	Service weight incl battery		kg
2.2		Axle load, with load, front/rear		kg	960/2750 Min batt.
2.3		Axle load, without load, front / rear		kg	1510/1200 Min batt.
2.4		Axle load, fork outreached with load, front / rear		kg	n/a
2.5		Axle load, fork retracted with load, front / rear		kg	n/a
Tyres, chassis	3.1	Tyres			Vulcollan
	3.2	Tyre size, drive side		mm	250x105
	3.3	Tyre size, load side		mm	150x55
	3.4	Dimensions additional wheels (castor wheels)		mm	n/a
	3.5	Wheels, number front/rear (drive side/load side, x = driven wheels)			1x/8
	3.6	Track, drive side	b10	mm	n/a
	3.7	Track, load side	b11	mm	806/906/1006
Dimensions	4.1	Tilt of mast/fork carriage, forward/backward		Grad	n/a
	4.2	Height, mast lowered	h1	mm	h12/2+592
	4.3	Free lift	h2	mm	n/a
	4.4	Lift height H = h13+h3	H	mm	3285-7185 (without h9)
	4.5	Height, mast extended	h4	mm	h12+2140
	4.6	Straddle lift	h5	mm	n/a
	4.7	Height of overhead guard (cabin)	h6	mm	2356
	4.8	Seat height/stand height	h7	mm	215-h12
	4.10	Height of wheel arms	h8	mm	175
	4.11	Additional lift	h9	mm	775
	4.14	Stand height, elevated	h12	mm	3600-7400
	4.15	Height lowered	h13	mm	90
	4.19	Overall length	l1	mm	3055
	4.20	Length to face of forks	l2	mm	1903
	4.21	Overall width	b1	mm	970/1070/1170
	4.21.1	Width over stabilizers		mm	n/a
	4.22	Fork dimensions	s/e/l	mm	70/147/1150
	4.23	Fork carriage to ISO 2328, clas / form A, B			n/a
	4.24	Width of fork carriage	b3	mm	560
	4.25	Width over forks, min/max	b5	mm	450 - 800
	4.26	Distance between wheel arms	b4	mm	n/a
	4.27	Width across guide rolls	b6	mm	1148-1814
	4.28	Reach distance	l4	mm	n/a
	4.29	Reach lateral	b7	mm	n/a
	4.30	Reach lateral from vehicle centerline	b8	mm	n/a
	4.31	Ground clearance, mast	m1	mm	n/a
	4.32	Ground clearance, centre of wheelbase	m2	mm	25
	4.33	Aisle width with pallet 1000 x 1200, crosswise	Ast	mm	n/a
	4.34	Aisle width for pallet 800 x 1200, lengthwise	Ast	mm	Platform or load width + clearance
	4.35	Turning radius	Wa	mm	1790
4.37	Length incl reach legs	l7	mm	n/a	
4.38	Distance to swivelling-fork pivot	0	mm	n/a	
Performance data	5.1	Travel speed, with/without load		km/h	11/11
	5.1.1	Travel speed with/without load, backwards		km/h	11/11
	5.2	Lift speed, with/without load		m/s	0,21/0,32
	5.3	Lowering speed, with/without load		m/s	0,4/0,4
	5.4	Reach speed, with / without load		m/s	n/a
	5.7	Gradient, with/without load		%	n/a
	5.8	Max gradeability, with / without load, 5 min rating		%	7,1
	5.9	Acceleration time 0-10 m, with/without load		s	6,3/5,8
	5.10	Service brake: electric, hydraulic			Electric
	5.10.1	Parking brake: electric, hydraulic			Electric
Electric engine	6.1	Drive motor, rating S2 60 min		kW	2,7
	6.2	Lift motor		kW	8 (20%)
	6.3	Battery according to DIN 43531/35/36	A,B,C		BS
	6.4	Battery voltage / Battery capacity		V/Ah	24/560-775
	6.5	Battery weight		kg	Min 500 Max 700
	6.6	Power consumption according to VDI cycle		kWh/h	
Additional data	8.1	Speed regulation			AC traction
	10.1	Operating pressure attachments		bar	n/a
	10.2	Oil flow for attachments		l/min	n/a
	10.7	Noise level at operator's ear, according to EN 12 053		db(A)	66

* Varies according to battery size

All rights reserved to change above specification